

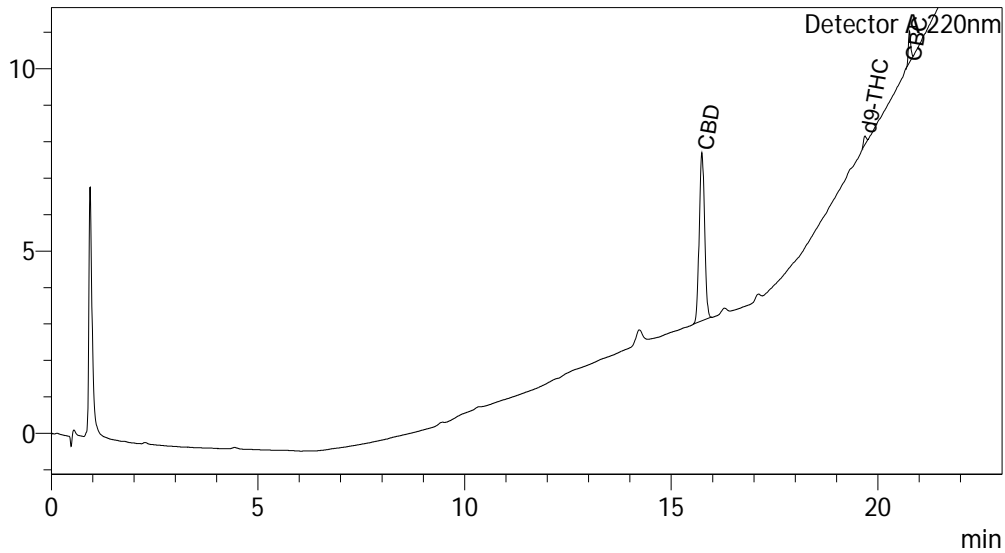
# Certificate of Analysis

## Sample Information

Client : Upstate Elevator Supply Co.  
 Sample ID : UESC\_30Caps-01222019  
 Sample Type : Capsule, Coconut Oil  
 Analyst : RB  
 Receipt Date : NA  
 Test Date : 1/22/2019

## Chromatogram

mV



## Cannabinoid Summary

Detector A

ID#	Name	Dry weight %
1	CBDV	0.00
2	CBD	3.83
3	CBG	0.00
4	CBDA	0.00
5	CBGA	0.00
6	CBN	0.00
7	d9-THC	0.12
8	d8-THC	0.00
9	CBC	0.34
10	THCA-A	0.00

Total THC	0.12	%
Total THC	1.17	mg/g
Total CBD	3.83	%
Total CBD	38.35	mg/g

Serving Size: 1 capsule, 0.863g

Total THC: 1.01 mg/capsule  
 Total CBD: 33.10 mg/capsule



Percentage data represents weight percentage of sample as received by Kria Botanicals.  
 Total THC = THCa \* 0.877 + d9-THC; Total CBD = CBDA \* 0.877 + CBD; Instrument: High Performance Liquid Chromatography (HPLC)  
 The collected data was compared to data collected for certified reference standards at known concentrations.