

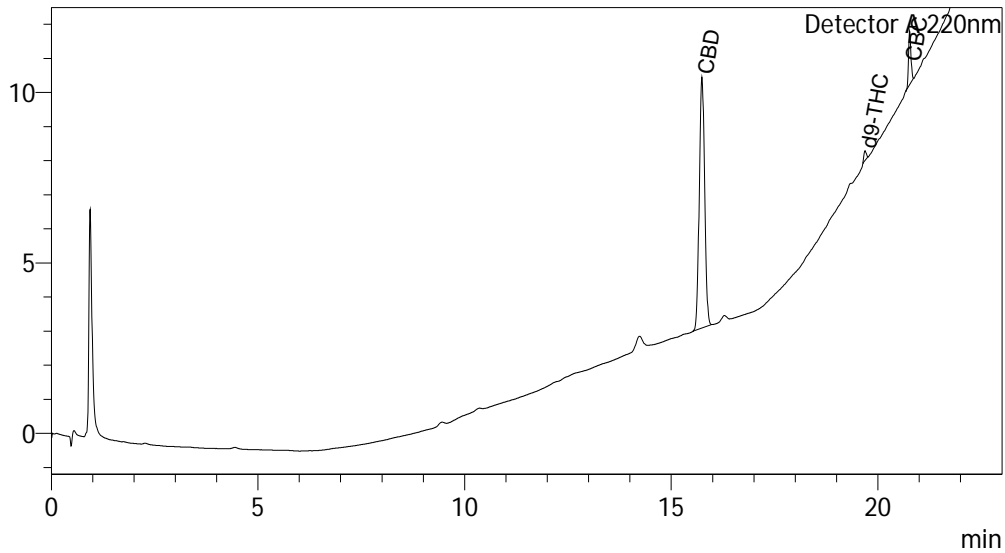
Certificate of Analysis

Sample Information

Client : Upstate Elevator Supply Co
 Sample ID : UESC_50Caps-01222019
 Sample Type : Capsule, Coconut Oil
 Analyst : RB
 Receipt Date : NA
 Test Date : 1/22/2019

Chromatogram

mV



Cannabinoid Summary

Detector A

ID#	Name	Dry weight %
1	CBDV	0.00
2	CBD	6.13
3	CBG	0.00
4	CBDA	0.00
5	CBGA	0.00
6	CBN	0.00
7	d9-THC	0.12
8	d8-THC	0.00
9	CBC	0.62
10	THCA-A	0.00

Total THC	0.12	%
Total THC	1.24	mg/g
Total CBD	6.13	%
Total CBD	61.32	mg/g

Serving Size: 1 capsule, 0.897g

Total THC: 1.11 mg/capsule
 Total CBD: 55.00 mg/capsule



Percentage data represents weight percentage of sample as received by Kria Botanicals.
 Total THC = THCa * 0.877 + d9-THC; Total CBD = CBDA * 0.877 + CBD; Instrument: High Performance Liquid Chromatography (HPLC)
 The collected data was compared to data collected for certified reference standards at known concentrations.